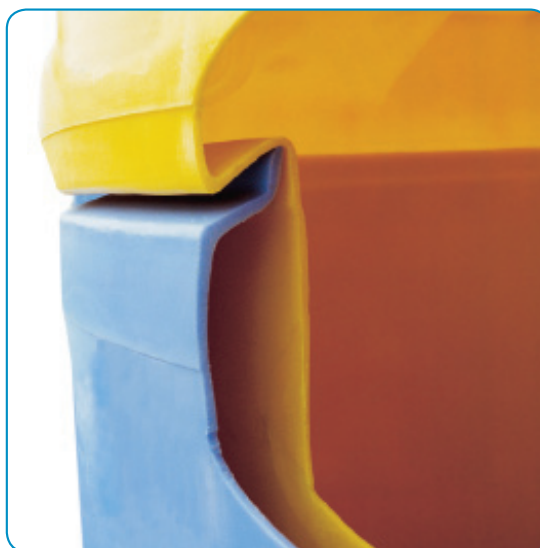


INNOVATIVE TANK SOLUTIONS

SAFE-Tank®: a complete system for secondary containment.



Poly Processing's SAFE-Tank® is a "tank-within-a-tank" system that keeps contaminants from entering the interstitial area. These tanks provide secondary containment to avoid the damaging of equipment or property, loss of chemical, or injury to employees in the event of a spill.

The SAFE-Tank®:

- Provides 110% secondary containment.
- Eliminates the expense, cost and maintenance of secondary concrete containment.

Poly Processing's exclusive OR-1000™ system was specifically designed to address the aggressive oxidation effects of sodium hypochlorite, sulfuric acid and hydrochloric acid by adding an additional chemical barrier between XLPE and the chemical.

The advantages of OR-1000™:

- The result gives you 4 times the antioxidant strength of any polyethylene on the market today!
- All wetted surfaces are covered by OR-1000™, eliminating the opportunity for a chemical attack on the structural portion of the tank

SAFE-Surge™ MANWAY COVERS:
TANK Lid for package

Ensure that your tank maintains the proper ACFM at all times.



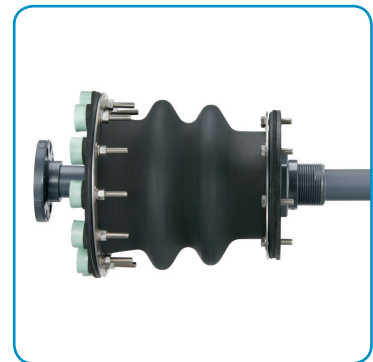
THE B.O.S.S.™:
Pump Suction Fitting

With its streamlined one-piece design, the B.O.S.S.™ (bolted one-piece sure seal) reduces the seal point to a single gasket to greatly reduce chances for leakage.

ENHANCED BELLOWS TRANSITION FITTING

Connected to Pump Suction Fitting

Bottom drain connection fitting that maintains 110% minimum containment requirements, while allowing you to connect to your plumbing with a fully enclosed expansion joint, that expands freely during loading and unloading, and eliminates damage from piping vibrations caused by pumps.



UNIVERSAL BALL DOME FLANGE
2" Fill Flange and 2" Level Fitting

An economical flange fitting which allows for vertical plumbing.

BULKHEAD FITTINGS

2" Spare Bulkhead, 3" Overflow Bulkhead and 4" Vent Bulkhead

An economical fitting best that can be installed on sidewall, overflow or dome.

