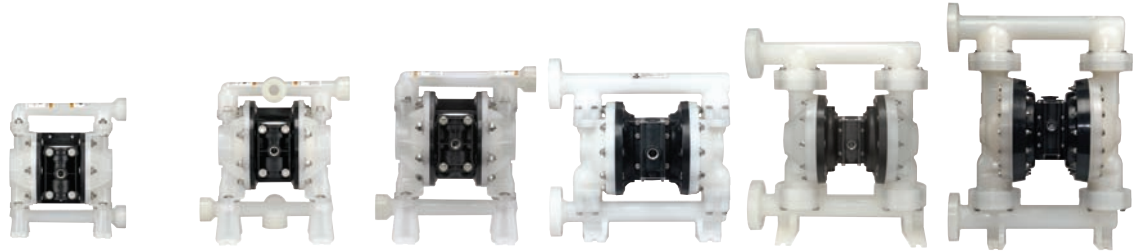


Model Overview: Non-Metallic

EXPerT Series Pumps: Non-Metallic Models

NON-METALLIC



Models:	3/8"	1/2"	3/4"	1"	1-1/2"	2"
Maximum Flow GPM (LPM)	10.6 (40.1)	14.4 (54.5)	14.8 (56)	53 (200)	123 (465)	184 (696)
Max. Discharge Pressure PSI (BAR)	100 (6.9)	100 (6.9)	100 (6.8)	120 (8.3)	120 (8.3)	120 (8.3)
Fluid Ports Inlet/Outlet (BSP)	3/8 - 18 N.P.T.F. - 1 Rp 3/8(3/8-19 BSP) Parallel (Side or Center)	1/2 - 18 N.P.T.F. - 1 Rp 1/2(1/2-14 BSP) Parallel (Side or Center)	3/4 - 14 N.P.T.F. - 1 Rp 3/4(3/4-14 BSP) Parallel	1" ANSI/DIN Flange (Side or Center) 1 - 11-1/2" NPT Rp 1(1-11 BSP) (Center Discharge)	1-1/2" ANSI/DIN Flange (Side or Center)	2" ANSI/DIN Flange (Side Discharge)
Materials of Construction	Acetal Polypropylene PVDF	Acetal Polypropylene PVDF	Polypropylene	Polypropylene PVDF	Polypropylene PVDF	Polypropylene PVDF
Pump Weight lbs (Kg.)	4.16 (1.89) Acetal Single Port 4.26 (1.93) Acetal Multi Port 4.50 (2.04) PVDF Single Port 4.62 (2.10) PVDF Multi Port 3.44 (1.56) Poly Single Port 3.55 (1.59) Poly Multi Port	6.28 (2.85) 6.67 (3.03) 6.78 (3.08) 7.24 (3.28) 5.21 (2.36) 5.44 (2.47)	5.61 (2.54)	19.35 (8.78) Poly Threaded 19.59 (8.89) Poly Center Port 19.87 (9.01) Poly Side Port 25.83 (11.72) PVDF Threaded 26.72 (12.12) PVDF Center Port 27.15 (12.32) PVDF Side Port	42.60 (19.32) Poly Side Port 63.94 (29.0) PVDF Side Port 42.30 (19.19) Poly Center Port 55.94 (25.37) PVDF Center Port	85.3 (38.7) Poly 110.9 (50.3) PVDF
Max. Solids inches (mm)	1/16" (1.6)	3/32" (2.4)	3/32" (2.4)	1/8" (3.2)	1/4" (6.4)	1/4" (6.4)
Maximum Dry Suction Lift ft (m)	8.5 (2.6) (PTFE fitted)	7.9 (2.4) (PTFE fitted)	4.27 (1.3) (PTFE fitted)	19 (5.7)	14 (4.2)	14 (4.2)
Recommended Filter/Regulator Air Line Kit	P29122-600 66073-1	P29122-600 66073-1	P29122-600 66073-1	P29221-610 66073-2	P29241-610 66084-1	P29351-600 66109

Model Overview: Metallic

EXPert Series Pumps: Metallic Models



Models:	1/2"	3/4"	1"	1-1/2"	2"	3"
Max. Flow GPM (LPM)	12 (45.4)	13.6 (51.5)	52 (197)	123 (465)	172 (651)	275 (1,041)
Maximum Discharge Pressure PSI (BAR)	100 (6.9)	100 (6.8)	120 (8.3)	120 (8.3)	120 (8.3)	120 (8.3)
Fluid Ports Inlet/Outlet (BSP)	3/8 - 18 NPTF-1 Rp 3/8 (3/8-19 BSP Parallel) (Side or Center)	3/4 - 14 NPTF-1 Rp 3/4 (3/4-14 BSP Parallel)	1-11-1/2" NPT Rp1(1-11 BSP) (Side or Center)	1-1/2 - 11-1/2 NPTF Rp1-1/2(1-1/2 -11 BSP) (Side or Center) 1-1/2 ANSI/DIN (SS only/Center)	2" NPTF Rp2(2-11 BSP) (Side or Center) 2" ANSI Flange with 2" pipe tap (SS only/Center)	3" NPTF Rp3(3-11 BSP) (Center)
Materials of Construction	Aluminum Stainless Steel	Aluminum	Aluminum Cast Iron Stainless Steel Hastelloy®	Aluminum Cast Iron Stainless Steel Hastelloy	Aluminum Cast Iron Stainless Steel Hastelloy	Aluminum Cast Iron Stainless Steel Hastelloy
Pump Weight lbs. (Kg.)	10.36 (4.7) AL/AL Motor 16.57 (7.52) SS/AL Motor 8.04 (3.65) AL/Poly Motor 14.25 (6.46) SS/Poly Motor	8.74 (3.96)	20.7 (9.4) Alum. 35.2 (16.0) CI 38.2 (17.3) SS 39.6 (18) Hastelloy add 4.65 (2.11) for Alum. air motor, add 11.09 (5.03) for SS air motor	37.7 (17.1) Alum. 73.2 (33.2) CI 61.2 (27.8) SS 86.9 (39.4) Hastelloy add 3.08 (1.40) for Alum. air motor, add 14.39 (6.53) for SS air motor	64 (29) Alum. 133 (60) CI 122 (55.3) SS Threaded 114 (51.7) SS Flange 122 (55.3) Hastelloy add 34 (15) for CI or SS air motor	113 (51.3) Alum. 197 (89.4) CI 203 (92.1) SS 203 (92.1) Hastelloy add 40 (18.1) for SS air motor
Max. Solids inches (mm)	3/32" (2.4)	3/32" (2.4)	1/8" (3.32)	1/4" (6.4)	1/4" (6.4)	3/8" (9.5)
Max, Dry Suction Lift ft. (m)	9.1 (2.8) (PTFE Fitted)	6.93 (2.1) (PTFE Fitted)	19 (5.7) (Elastomeric Fitted)	14 (4.2) (Elastomeric Fitted)	19 (5.7) (Elastomeric Fitted)	19 (5.7) (Elastomeric Fitted)
Recommended Filter/Regulator Air Line Kit	P29122-600 66073-1	P29122-600 66073-1	P29221-610 66073-2	P29241-610 66084-1	P29351-600 66109	P29351-600 66109

METALLIC

Hastelloy-C® is a registered trademark of Haynes International, Inc.